

 V A N T A G E



Vantage Audio

Advanced Multi-Room Features For Today's Digital Lifestyle

multi-room audio solution

Scroll through your entire music library. View song, artist and album information from Equinox keypads, touchscreens or mobile apps. With more sources, zones, power, control and features, Vantage's multi-room audio system simplifies the enjoyment of your music.



The Vantage Audio Solution

850D-DA, P3500, P200

The multi-room audio system offers advanced and stylish features that make enjoying your musical experience even easier. From the 850D-DA amplifier and NuVo 3500 Player series amplifiers/players to the Equinox family of keypads, touchscreens and apps, this system can enhance every room where you live, work or play with an endless variety of your favorite music. Through Equinox manage and play any source/zone combination.



audio system *core products*

The Vantage multi-room audio system is easily controlled through Vantage keypads, touchscreens or apps, each provide the system owner with quick and intuitive access.

Multi-Room Amplifier

850D-DA

The cornerstone of the Vantage multi-room audio system is the 850D-DA Amplifier. With eight zones of audio distribution from twelve sources and highly efficient class D digital amplifiers, the 850D-DA is the most powerful amplifier from Vantage. For larger installations, an 850 system is scalable up to nine units, providing 72 zones of coverage.



NuVo 3500 Player

P3500

The P3500 provides state of the art features for today's digital multi-room audio systems. Additionally, the amplifier/player devices are equipped to stream content from network stored audio, analog sources and several Internet streaming services such as Pandora™, SiriusXM™, Rhapsody™, Tune-In™ and others, this server melds perfectly with the Vantage audio solution.

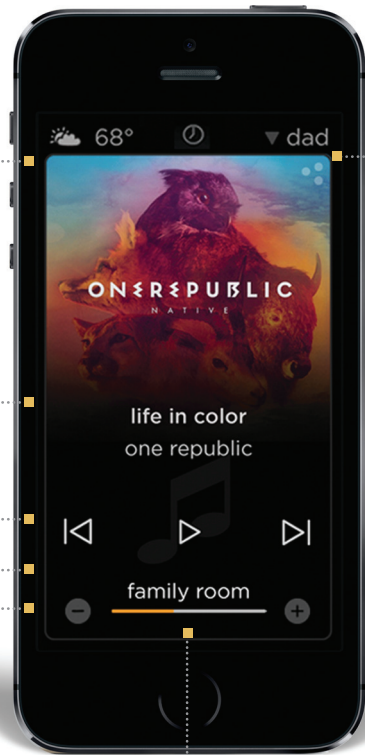


audio system *interfaces*

See live cover art and graphical metadata from Vantage sources or supported partners

View currently playing music information such as song, album, artist, etc. or streaming service information such as a Pandora™ channel Transport commands for current source

Live graphic animation indicates activity
Turn on/off audio and adjust volume



Zone Power

"Press" the discovery dots for more information about audio in the 2nd or full screen level

Widgets

Widgets for Equinox are designed to work specifically for use with the Vantage multi-room audio system, so using these core products will guarantee the best possible audio experience.

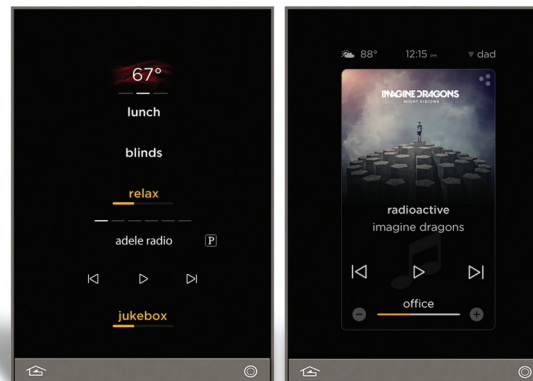


Equinox 73 LCD Touchscreen
EQ73TB-TI

The Equinox 73 touchscreen is a beautiful wall-mounted interface for the Vantage audio system. It features a full color, capacitive touchscreen and audio dashboard for quickly accessing music libraries and streaming services.

Equinox 40 and 41 Digital Keypads EQ40TB-TI and EQ41TB-TI

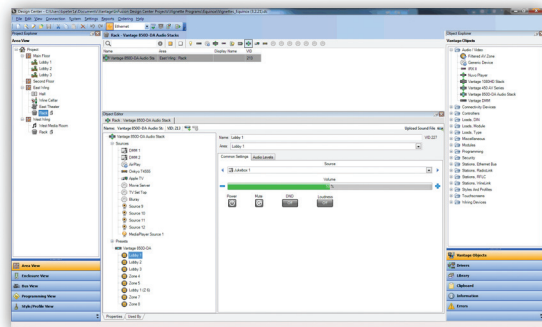
The Equinox 40 and 41 keypads are beautiful wall-mounted interfaces for the InFusion multi-room audio system. They feature full color, capacitive touchscreens and audio dashboards for quickly controlling music. You can easily control music in the room through the audio mini-widget and music for the whole home with scenes. View, play, pause or skip current song, album, artist, etc. from music servers, tuners or streaming services. Turn audio on or off or adjust volume plus much much more.



audio *extra features*

Expansion

Engineered for expansion, the 850D-DA features room to add up to 72 zones.



Easy Setup

Through InFusion Design Center software, zones, sources and widgets come together quickly. No additional programming needed.

Streaming Services

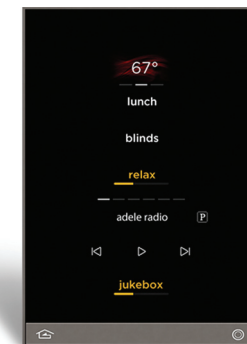
Bring an entire world of music to your home through the NuVo Player Portfolio Streaming services from Pandora, Rhapsody, SiriusXM, Tunein, Last.fm, as well as iTunes and Windows Media libraries on each NuVo player provide up to four different streams simultaneously.

When teamed together with Equinox, an endless variety of music options means you are always just a tap or button press away from your favorite selection.



Premier Partners

Vantage premier drivers are developed to deliver the complete multi-room audio and multi-system control experience; based on collaboration with leading custom electronics companies. Available for download and use through Design Center, when used in conjunction with the Equinox family of interfaces, premier partner drivers provide a simplified dashboard and rich media experience for the entire luxury space.



specifications

850D-DA Multi-Room Amplifier

850D-DA



Zones

8 Per Amplifier, 72 Total Per System

Sources

8 Stereo Audio, 12 Digital Audio

Interfaces

Equinox 40

Equinox 41

Equinox 73

Standard Keypad (Through Tasks)

LCD Touchscreen on Front

Zone Controls

Volume

Mute

Power

Audio Amplifier

Total Channels • 12

Minimum Load Impedance • 4 Ohms

Frequency Response • 20 Hz – 20kHz -3 dB

Total Harmonic Distortion • <0.1% rated power

Signal to Noise Ratio • 100 db (IHA-A, 1V Input/Unbalanced)

Audio Connections

Source Inputs • 8 Analog, 12 Digital

Source Loop Outputs • 12

Zone Outputs • 6 Speaker Level, 2 Line Level

Paging Input • (1) Mono

Paging Output • (1) Mono

Connections

Ethernet Bus • 1 Shielded RJ45 Socket – 100BaseT

Expansion Bus • 1 Dual RJ45 Socket

USB • USB min-B 5 pin

Power

Voltage • 110 or 240 VAC, 50-60 Hz

Fuse Rating • 100-240V Input; T5.0A 250V US and Canada

220-240V Input; T3.15A 250V Europe

Consumption • 280 Watts Continuous

Standby Consumption • 2 Watts

Dimensions, HWD

3.54"H x 17.13"W x 15.3"D

(90mm x 435mm x 390mm)

Miscellaneous

Weight • 22 lbs (10 kg)

NuVo Player Portfolio

P3500



Input/Output Connectors

Line Input / Output	3-Dual RCA
Trigger Input / Output	3 - TS 3.5mm Stereo Jack
Speaker Output	3 - (4 Contact) Pluggable
USB 2.0 Connection (Type A)	3 - (Zone 3 on Front)
Local Area Network (LAN)	1 - Dual RJ45

Supported Audio Formats

Music Files (USB or network) • MP3, WMA, AAC, FLAC, Ogg Vorbis, WAV
Internet Radio • Pandora, Sirius/XM, Rhapsody, TuneIn, Deezer

Power Requirements

Input Voltage • 100 -240VAC, 50/60Hz
Power Consumption • 680W (max), 260W (Typical - Music), 120W (UL60065 - 1/8 Power)

IP Control

Apple iPhone®, iPod Touch® and iPad®, Android® Mobile, Android Tablet

Network Connectivity

LAN (Wired Connection) • 10/100base-t Ethernet
Internal Ethernet Switch to 3 Independent Zone Nodes

Line Output

Output Level • 0-2.1V RMS
Output Impedance • 470 Ohms
Signal-to-Noise Ratio (IHF-A) • 100 dB

Line Input

Input Impedance • 100 KOhms
Input Overload • 2.3 V RMS

Amplifier Output (Typical of 3 Zones)

Rated Output Power (1KHz/1% Distortion)

4 Ohm - 200W (100W x 2)

6 Ohm - 150W (75W x 2)

8 Ohm - 100W (50W x 2)

Total Harmonic Distortion (1/2 Power)

100Hz - 0.003%

1KHz - 0.003%

6.67KHz - 0.020%

Speaker Impedance • 4/6/8 Ohms

Frequency Response (20 - 20kHz) • +/- 0.5 dB

Damping Factor • 80+

Signal-to-Noise Ratio (IHF-A) • 100 dB

Audio Processing

Audyssey Dynamic Volume™, Balance, Loudness Compensation

Bass Equalization • +/- 12 dB Range

Treble Equalization • +/- 12 dB Range

Operating Temperature

0° C - 40° C

Dimensions, HWD

1-3/4"H x 17"W x 9-7/8"D

(44mm x 430mm x 250mm)

Miscellaneous

Weight • 7.7 lbs (3.5 kg)

Regulatory Approvals

Safety • cTUVus, CE-LVD

EMC • FCC, IC, CE-EMC, C-Tick

Environmental Compliance • RoHS

NuVo Player Portfolio

P3100



Input/Output Connectors

Line Input / Output	3 - Dual RCA
Trigger Input / Output	3 - TS 3.5mm Stereo Jack
Speaker Output	3 - (4 Contact) Pluggable
USB 2.0 Connection (Type A)	3
Local Area Network (LAN)	1 - Dual RJ45

Supported Audio Formats

Music Files (USB or network) • MP3, WMA, AAC, FLAC, Ogg Vorbis, WAV
Internet Radio • Pandora, Sirius/XM, Rhapsody, TuneIn

Power Requirements

Input Voltage • 100 -240VAC, 50/60Hz
Power Consumption • 200W (max), 42W (Typical - 3 Zones, 1/8 Audio Power)

IP Control

Apple iPhone®, iPod Touch® and iPad®, Android® Mobile, Android Tablet

Network Connectivity

LAN (Wired Connection) • 10/100base-t Ethernet
Internal Ethernet Switch to 3 Independent Zone Nodes

Line Output

Output Level • 0-1000 mV RMS
Output Impedance • 5 Ohms
Signal-to-Noise Ratio at Rated Output • 91 dB A - Weighted

Line Input

Input Impedance • 10 KOhms
Input Overload • 2.3 V RMS

Amplifier Output (Typical of 3 Zones)

Rated Output Power (8 Ohm) • 40W (20W x 2)
Two Channels Driven 20 Hz - 20 KHz @ 0.5% Distortion
Rated Distortion (1/2 Power) • 0.20%
Speaker Impedance • 6 - 8 Ohms
Frequency Response (20 - 20kHz) • +/- 0.5 dB
Damping Factor • 50+
Signal-to-Noise Ratio at Rated Output • 92 dB A - Weighted

Audio Processing

Audyssey Dynamic Volume™, Balance
Bass Equalization • +/- 12 dB Range
Treble Equalization • +/- 12 dB Range

Operating Temperature

0° C - 40° C

Dimensions, HWD

2.13"H x 16.93"W x 10.16"D (Including Feet)
(54mm x 430mm x 258mm)

Miscellaneous

Weight • 6.45 lbs (2.9 kg)

Regulatory Approvals

Safety • cTUVus, CE-LVD
EMC • FCC, IC, CE-EMC, C-Tick
Environmental Compliance • RoHS

NuVo Player Portfolio

P200



Input/Output Connectors

Line Input / Output	1 - TRS 3.5mm Stereo Jack
Setup Mic: (Audyssey)	1 - TRS 3.5mm Stereo Jack
Speaker Output	4 - Gold 5-Way Binding Post
USB 2.0 Connection (Type A)	1
Local Area Network (LAN)	1 - RJ45

Supported Audio Formats

Music Files (USB or network) • MP3, WMA, AAC, FLAC, Ogg Vorbis, WAV
Internet Radio • Pandora, Sirius/XM, Rhapsody, Tunes

Power Requirements

Input Voltage • 100 -240VAC, 50/60Hz
Power Consumption • 150W (max), 31W (Typical - 1/8 Audio Power)

IP Control

Apple iPhone®, iPod Touch® and iPad®, Android® Mobile, Android Tablet

Network Connectivity

LAN (Wired Connection) • 10/100base-t Ethernet
Wireless Connection • MIMO, 2 TX + 2 RX Channels, IEEE 802.11a/b/g/n

Line Output

Output Level • 0-1000 mV RMS
Output Impedance • 5 Ohms
Signal-to-Noise Ratio at Rated Output • 88 dB A - Weighted

Line Input

Input Impedance • 10 KOhms
Input Overload • 2.3 V RMS

Amplifier Output (Typical of 3 Zones)

Rated Output Power (8 Ohm) • 120W (60W x 2)
Two Channels Driven 20 Hz - 20 KHz @ 0.5% Distortion
Rated Output Power (4 Ohm) • 120W (60W x 2)
Two Channels Driven 20 Hz - 20 KHz @ 0.5% Distortion
Rated Distortion (1/2 Power) • 0.20%
Speaker Impedance • 4 - 8 Ohms
Frequency Response (20 - 20kHz) • +/- 0.5 dB
Damping Factor • 65+
Signal-to-Noise Ratio at Rated Output • 92 dB A - Weighted

Audio Processing

Audyssey Dynamic Volume™, Balance
Bass Equalization • +/- 12 dB Range
Treble Equalization • +/- 12 dB Range

Operating Temperature

0° C - 40° C

Dimensions, HWD

1.69"H x 9.72"W x 6.89"D
(43mm x 247mm x 175mm)

Miscellaneous

Weight • 2.65 lbs (1.20 kg)

Regulatory Approvals

Safety • cTUVus, CE-LVD
EMC • FCC, IC, CE-EMC, C-Tick
Environmental Compliance • RoHS



System Information

LAN Connection • 5 LAN - RJ45 - 10/100/1000 Mbps
Wireless Connection • 2 TX x 2 RX MIMO, IEEE 802.11a/b/g/n
Dual Band - Concurrent
Wireless Data Rate • Up to 300 Mbps

Power Requirements

Power Supply • 12V DC, 1.0A
Input Voltage • 100-240VAC, 50/60 Hz
Rated Power • 12W

IP Control

Vantage, NuVo, Windows PC & Mac, Adobe
Flash-Enabled Mobile Devices and Computers, Apple
iPhone, iPod Touch and iPad

Regulator Approvals

Controller
EMC • FCC, IC, CE-EMC, C-Tick
Power Supply
Safety • cULus, GS Mark, CE-LVD
EMC • FCC, IC, CE-EMC, C-Tick
Environmental Compliance Europe • RoHS

Operating Temperature

0° C - 40° C

Dimensions, HWD

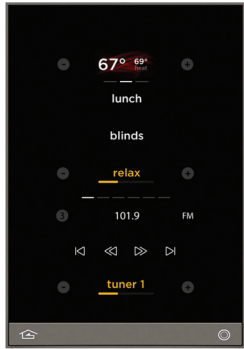
4.82"H x 6.97"W x 5.24"D (Including Antennas)
(112.5mm x 177mm x 133mm)

Miscellaneous

Weigh • 0.65lbs (.30kg)

Equinox 40 Digital Keypad

EQ40TB-TI



Display

4.3" Diagonal
Active Matrix Color LCD

Features

Up to 3 Swipable Pages
Single Layer Mini-Widget UI

Controls

Hard Buttons • 2 (1 Home, 1 Programmable)
Header Mini-Widget (Climate, Clock, Weather)
Scenes Mini-Widget
Audio Mini-Widget

Sensors

Proximity
Light (for Screen Brightness)

Connections

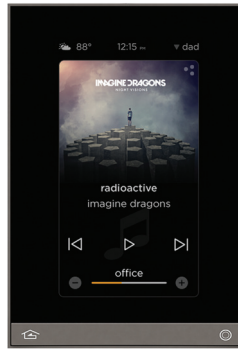
Station Bus • 1
Auxiliary • 1

Wall Dimensions

3.54"W x 4.72"H
0.45" Off-Wall

Equinox 41 Digital Keypad

EQ41TB-TI (Shipping Soon)



Display

4.3" Diagonal
Active Matrix Color LCD

Features

Single Layer Widget UI

Controls

Hard Buttons • 2 (1 Home, 1 Programmable)
Full Mini-Widgets:
Audio, Climate, Scenes, Weather, Video,
Cameras, Security, Energy, Theater

Sensors

Proximity
Light (for Screen Brightness)

Connections

RJ45 (PoE) • 1

Wall Dimensions

3.54"W x 4.72"H
0.45" Off-Wall

Multi-Room Audio Partners

NuVō®



AUTONOMIC

Integra®



iPort™

MOZAEX

ONKYO®



kaleidescape™

Russound®

marantz®

VANTAGE™

Multi-Room Amplification and Distribution

Vantage 850-DA
Vantage 450
NuVo Grand Concerto
NuVo Player Portfolio 100, 200, 3100, 3500
Russound MCA-C5

Audio Sources

Vantage DMM
Vantage InFusion Media Server (IMS)
Autonomic Mirage
Autonomic MMS
Integra TUN3.7
iPort FS Series
iPort IW Series
Kaleidescape Music System
Mozaex Solo
Nuvo Music Port Elite
NuVo Player Portfolio 100, 200, 3100, 3500
Nuvo NVT2 Series
Onkyo T4555
Marantz NA7004
Russound ST2

Equinox 73 Touchscreen

EQ73TB-T1



audio full screen shown above

Display

7.1" Diagonal

Active Matrix Color LCD

Features

Triple Layer Widget UI

Live Dashboard

Three Layer

Profiles for Users, Spaces, Functions and Time

Personalizable UI for Each User

Controls

Hard Buttons • 2 (1 Home, 1 Programmable)

Full Mini-Widgets:

Audio, Climate, Scenes, Weather, Video,

Cameras, Security, Energy, Theater

Sensors

Proximity

Light (for Screen Brightness)

Connections

RJ45 (PoE) • 1

Wall Dimensions

8.54"W x 4.72"H

0.45" Off-Wall

Equinox App - iPad

EQ-APP-5, EQ-APP-10, EQ-APP-X



dashboard shown above

Compatibility

Apple, Android

Features

Triple Layer Widget UI

Live Dashboard

Three Layer

Profiles for Users, Spaces, Functions and Time

Personalizable UI for Each User

Controls

Full Mini-Widgets:

Audio, Climate, Scenes, Weather, Video,

Cameras, Security, Energy, Theater

Licensing

Device License: A device license allows a single device to be connected to a Vantage system

Multi-License: A multi-license enables any number of supported devices to function as an interface when they are connected to a single InFusion system



Equinox App - iPhone

EQ-APP-5, EQ-APP-10, EQ-APP-X



audio widget shown above

Compatibility

Apple, Android

Features

Triple Layer Widget UI

Live Dashboard

Three Layer

Profiles for Users, Spaces, Functions and Time

Personalizable UI for Each User

Controls

Full Widgets:

Audio, Climate, Scenes, Weather, Video,

Cameras, Security, Energy, Theater

Licensing

Device License: A device license allows a single device to be connected to a Vantage system

Multi-License: A multi-license enables any number of supported devices to function as an interface when they are connected to a single InFusion system



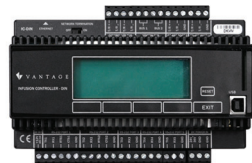
related products

In addition to the main products featured on page three; a complete Vantage multi-room audio solution could also contain one or more of the products listed below.

InFusion Controller
IC-36-1



InFusion DIN Controller
IC-DIN



Integration Controller
IRXII



8-Port Gigabit
Switch With PoE
DA1458



Equinox App
EQ-APP-5, EQ-APP-10,
EQ-APP-X





1061 South 800 East
Orem, Utah 84097
800.555.9891
801.229.2800
801.224.0355 fax

Vantage EMEA nv/sa
Binnendijk 40
B-9130 Beveren
Belgium
+32 3 773 31 06

www.vantagecontrols.com

©2014 by Vantage. All Rights Reserved.
Part# 1308141 Rev_D DM/TK 2/14